

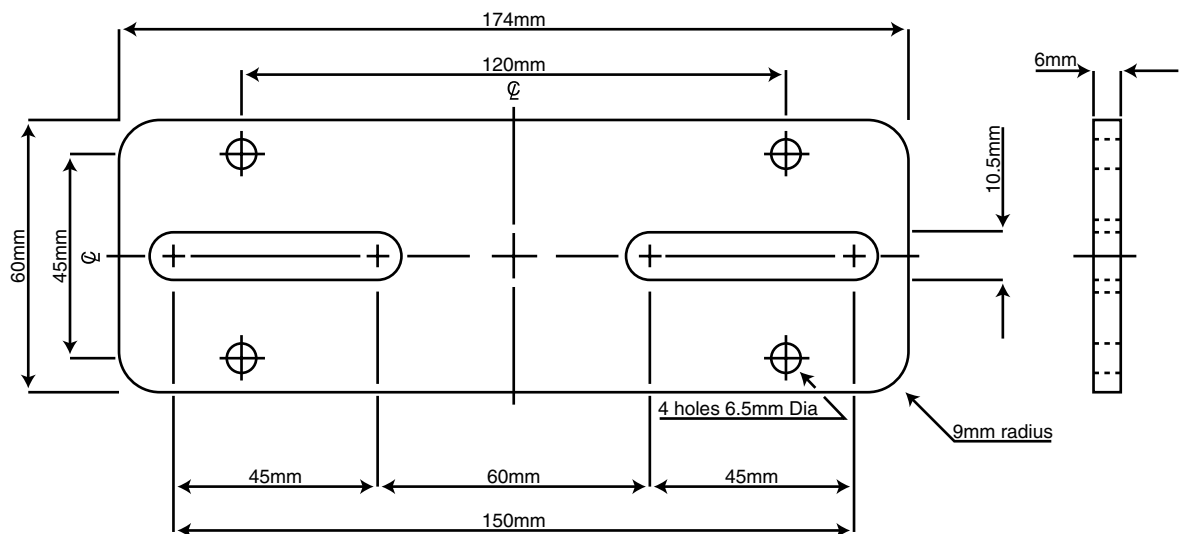
type REF 3-65

title REF 3-65 Spec & Plate
Dimension

drg PD_051024_014

date 24.10 .05

comment



Overview

The REF 3 series of brackets are designed for "top mounting" speakers weighing up to 25Kg. Generally used in conjunction with the REF 1 or REF 1HD wall arm or REF 2 or REF 2HD Ceiling Bracket, they also fit metal framing systems such as Unistrut®.

Weight 1.0kg / 2.2lbs

Features Positive locking swivel and tilt mechanism
Vertical or horizontal speaker mounting plate orientation
Laser-cut mounting plate

Maximum Load The REF 3-65 is suitable for use with speaker loads up to 25kg

Material Manufactured from steel

Finish Black or white powder coated steel components

Note For speaker loads up to 40kg use model REF 3HD-65 with either REF 1HD or REF 2HD