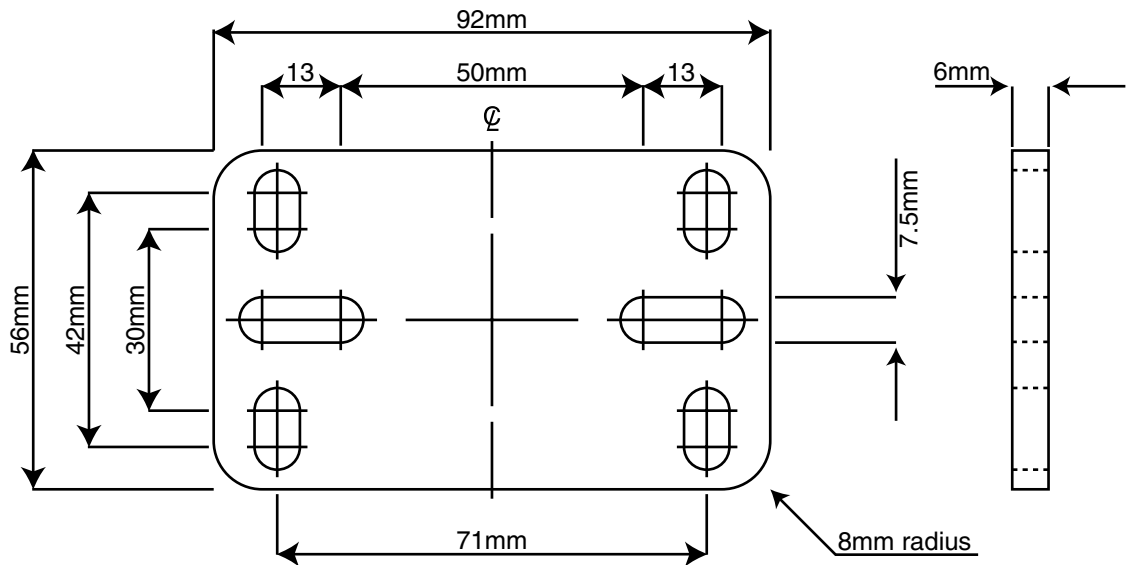


**type** REF 3-50  
**title** REF 3-50 Spec & Plate Dimension  
**drg** PD\_051024\_006  
**date** 24.10 .05  
**comment**



**Overview**

The REF 3 series of brackets are designed for "top mounting" speakers weighing up to 25Kg. Generally used in conjunction with the REF 1 or REF 1HD wall arm or REF 2 or REF 2HD Ceiling Bracket, they also fit metal framing systems such as Unistrut®.

**Weight** 1.0kg / 2.2lbs

**Features** Positive locking swivel and tilt mechanism  
 Vertical or horizontal speaker mounting plate orientation  
 Laser-cut mounting plate

**Maximum Load** The REF 3-50 is suitable for use with speaker loads up to 25kg

**Material** Manufactured from steel

**Finish** Black or white powder coated steel components

**Note** For speaker loads up to 40kg use model REF 3HD-50 with either REF 1HD or REF 2HD